

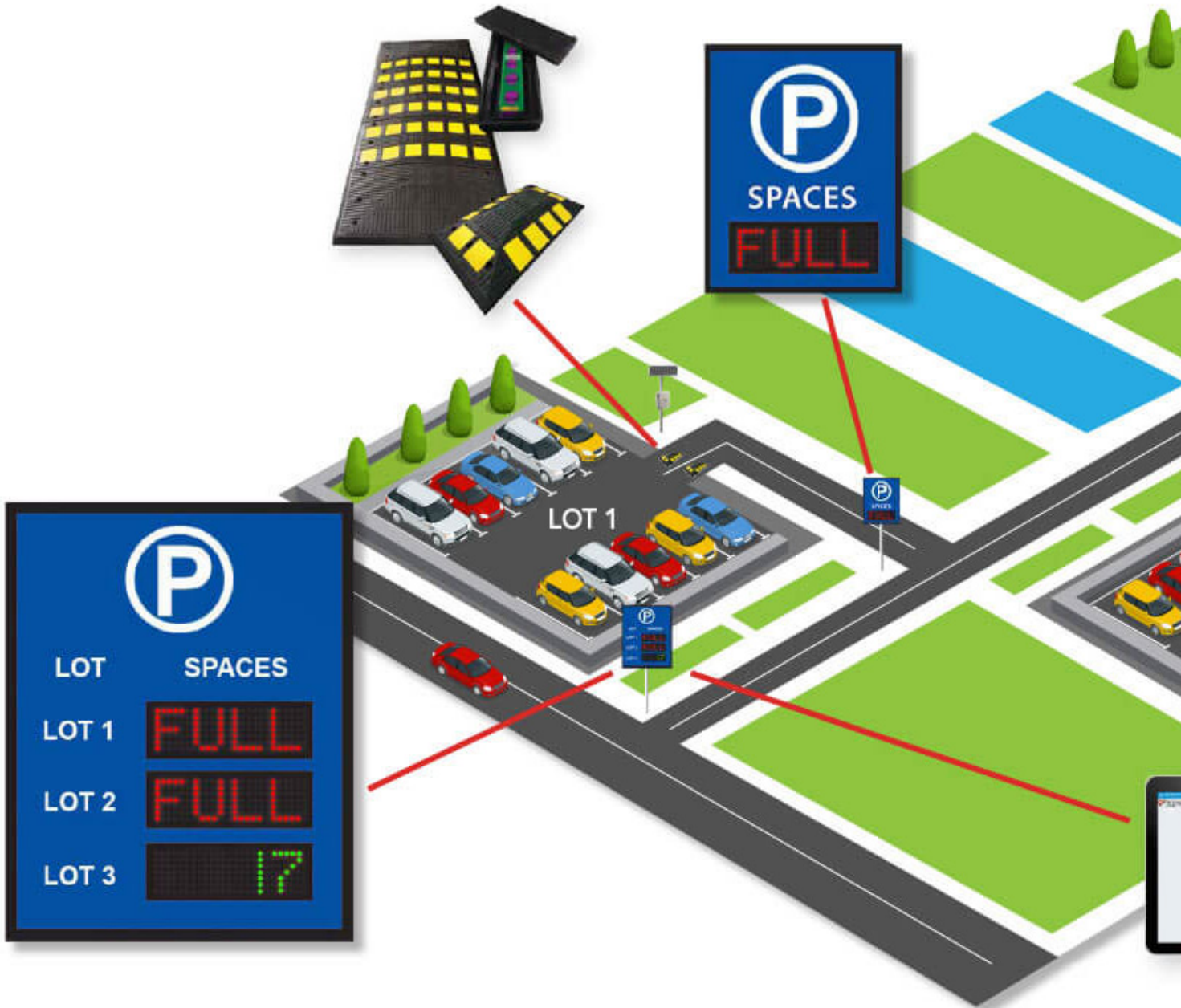
Product Data Sheet

OPENSOURCE® GUIDANCE



COUNT

OpenSpace™ Counting Solutions
Smart sensors embedded into speed humps or directly into road surfaces detect and count each vehicle that enters or exits your lot. The sensors communicate wirelessly to data collectors and signs to display real time occupancy to drivers.



| LOT | SPACES |
|-------|--------|
| LOT 1 | FULL |
| LOT 2 | FULL |
| LOT 3 | 17 |



COMMUNICATE

OpenSpace VMS

The Parking Logix OpenSpace single, multi-level & multi lot parking solutions include the OpenSpace Variable Messaging Sign (VMS). This sign communicates wirelessly with OpenSpace using our Data Collector to display real-time occupancy to drivers.



CONTROL

OpenSpace Cloud

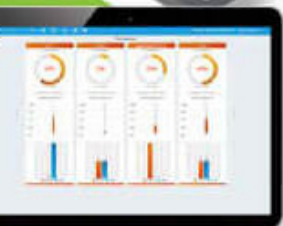
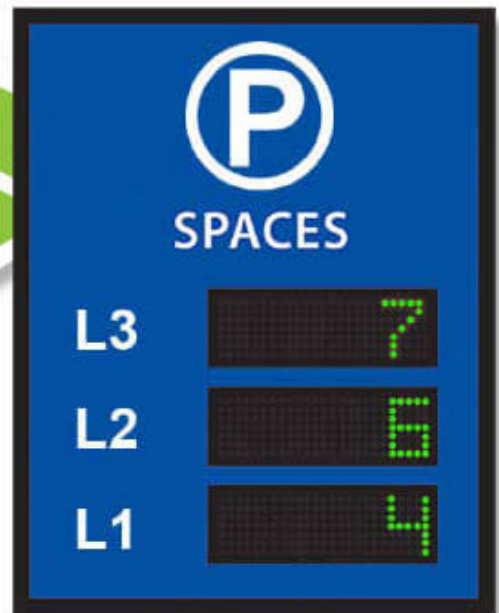
The OpenSpace Cloud stores all your parking data in the cloud so that you, or anyone looking for parking spots, can access it. Manage system settings, view up to the minute statistics, and generate detailed reports via the OpenSpace cloud with zero dependence on local IT infrastructure.



COMMUNICATE

OpenSpace VMS

The Parking Logix OpenSpace single, multi-level & multi lot parking solutions include the OpenSpace Variable Messaging Sign (VMS). This sign communicates wirelessly with OpenSpace using our Data Collector to display real-time occupancy to drivers.



CONTROL

OpenSpace Pro Software

The OpenSpace parking solution also includes the OpenSpace Pro software package. Set times of sign operation, reset or adjust the counter, and get statistics related to garage occupancy. OpenSpace Pro comes pre-loaded on a Windows tablet or laptop that connects directly to the OpenSpace VMS via Bluetooth.



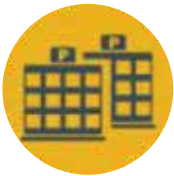
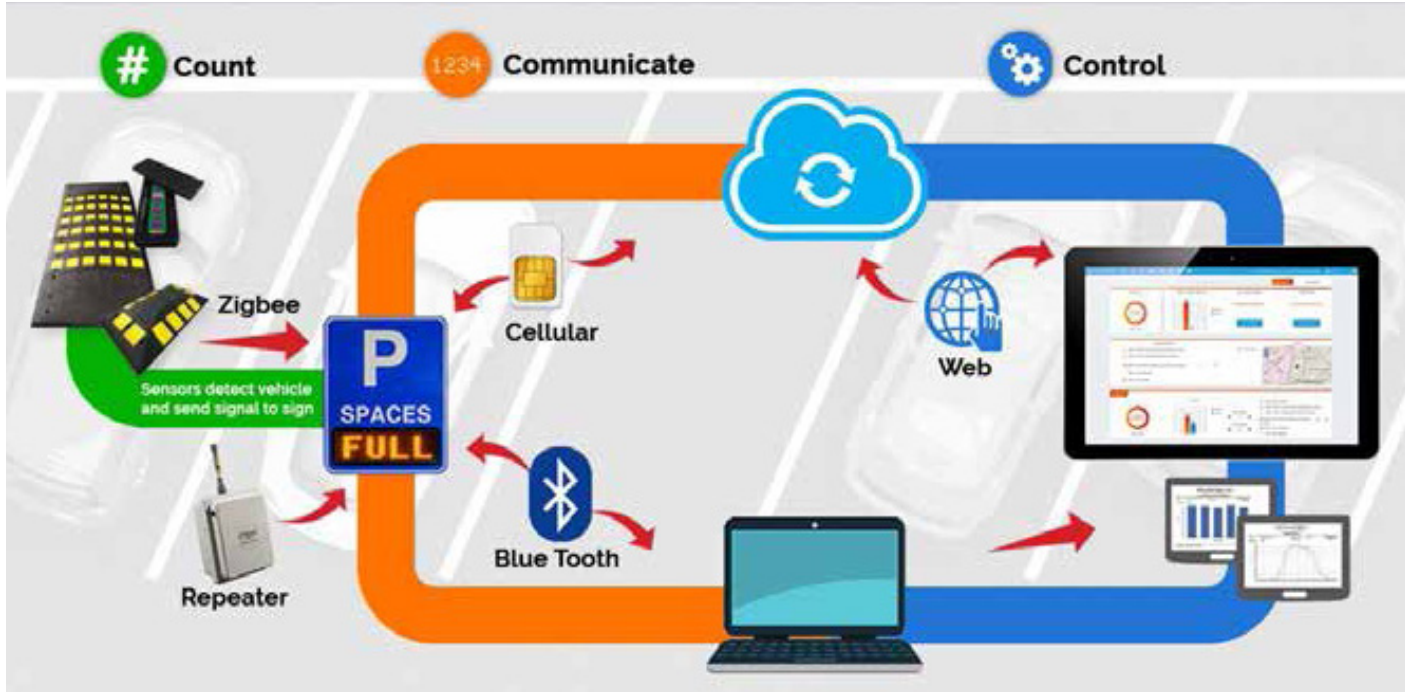
COUNT

OpenSpace™ Counting Solutions

The same equipment as utilised for open space car parks can be used in Multilevel parking garages. Should the multi level have non penetrating concrete or post tension slab the sensor can be glued to the floor to eliminate the need for any floor penetration

Product Data Sheet

OPENSOURCE®



Multi Lot Dashboard



Report Generation



Sign Reset



Sign Scheduling



Single Sign-on



Exportable Data

FEATURES

- 99% Accuracy
- Cost Effective Solution
- Quick Installation
- No Annual Maintenance fees required
- Web Dashboard and API
- 24 month warranty

BENEFITS

- Increase Lot Revenue
- Improved customer experience
- Decrease congestion and emissions
- Monitors Parking Statistics





Outdoor Surface

- No local power needed
- No local data services needed



Indoor Surface

- Adhesive option for post tension concrete
- No impact to protective surface membranes
- Traffic calms humps to increase pedestrian safety



Reduces Emissions & Congestion



Increases utilisation through traffic direction



Provides occupancy data



Reduces customer stress and frustration